

The Multi-Payer ACO Playbook for Sustainable Revenue Growth

▶ 10 June 2025



Panel



Amy Stevens

General Manager, Provider
Performance and Value Driven
Transformation, Innovaccer



Renee Tollison

Vice President, EVU Analytics &
Intelligence, Prisma Health



Puneet Budhiraja

Managing Director, Actuarial,
Humbi AI by Innovaccer



Michael Phillips, MD

Consultant and former CMO, Rise
Health



Agenda^{*}

- Introductions
- 2 organizations >> 2 ways to support progress
 - Prisma Health
 - Rise Health
- Panel discussion; participant chat questions

Solving for the entire Contract Lifecycle



Contract Design

Contract Modeler
Network Optimizer
Opportunity Navigator
Actuarial Intelligence ✨

Contract Execution

Analytics Models
Dashboard and Reporting
Population Stratification
Quality Management
Risk Management
Care Management
Pharmacy Quality
Actuarial Intelligence ✨



Contract Settlement

Financial Reconciliation
Shared Savings Distribution
Actuarial Intelligence ✨



Improved performance for leading healthcare organizations through contracting

\$400M

Total Savings

40%

Reduction in
Admission Rate
(in a year)

200+

Primary Care
Practices

2%

Reduction in
Cost of Care



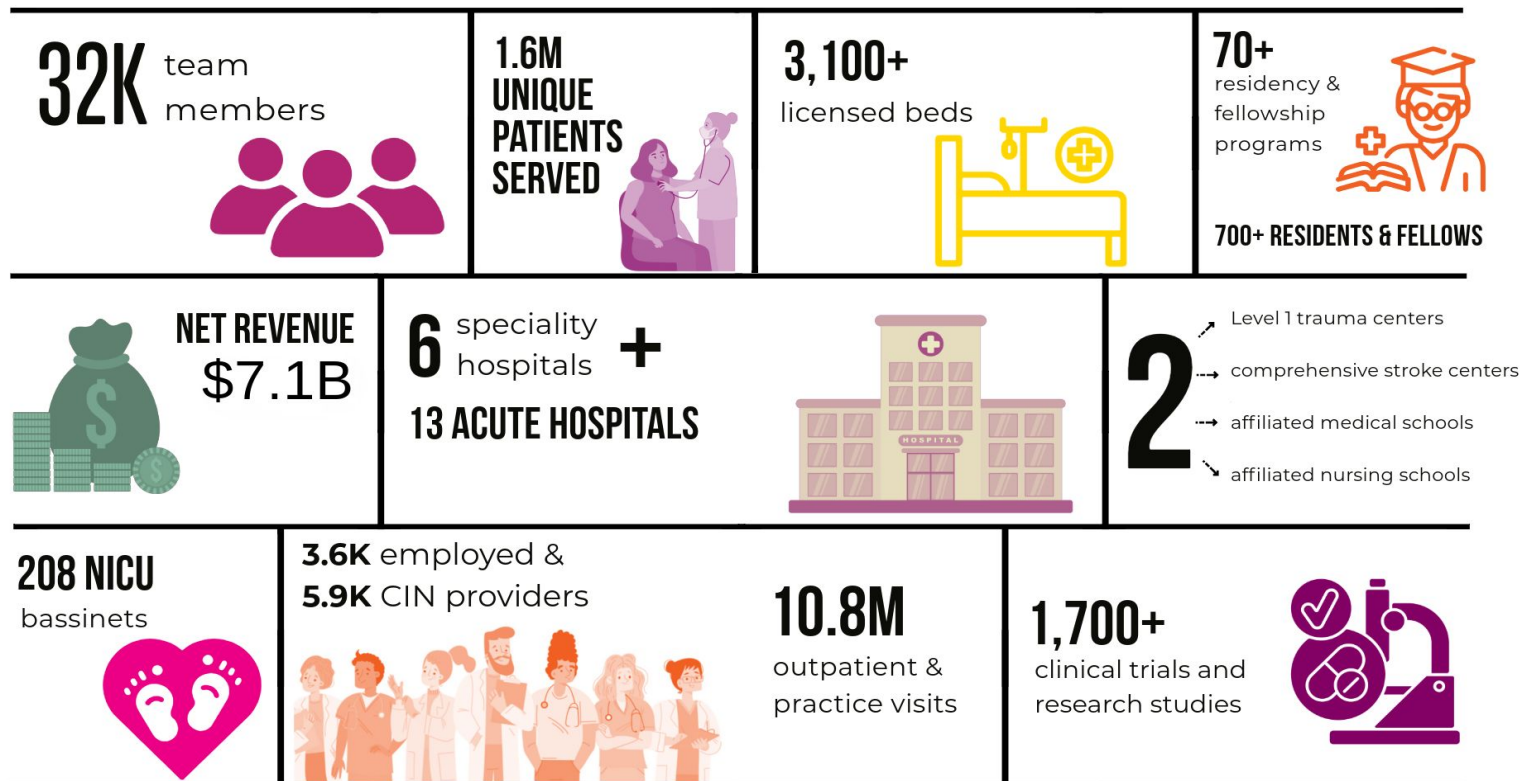


Prisma Health



Prisma Health is on a journey to transform the health care experience by living our purpose:

Inspire health. Serve with compassion. Be the difference.



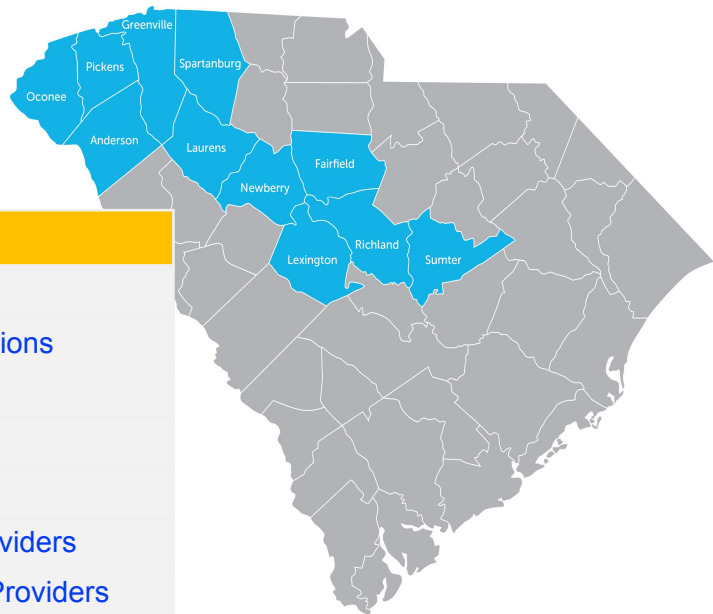


As one of the largest physician-led, clinically integrated networks in the Southeast, we are committed to providing a more streamlined, integrated patient experience across the care delivery system through aligned care models, shared best practices and enhanced digital tools and dashboards.

Covered Lives At-Risk	
Medicare (MSSP)	55,858
Medicare Advantage	54,739
Medicaid	253,257
Insurance Exchange	64,166
Commercial	108,318
Employer Direct	1,100
Prisma Health Plan	44,988
Total	578,426

By the Numbers

22	Hospitals
881	Practice Locations
5,964	Providers
1,129	Primary Care
4,835	Specialists
4,069	Employed Providers
1,895	Independent Providers
40	Skilled Nursing Facilities
12	Home Health Agencies
17	Hospice Agencies





Rise Health



Enabling the Transition to Value-Based Care

Overview

- **Founded:** 2022
- **First Practice Launch:** January 2023

Geographic Footprint

- New Mexico
- Nevada

Strategic Focus

- Partners with **Primary Care Groups** to transition from **Fee-for-Service (FFS)** to **Value-Based Care (VBC)**

Key Enablers (Humbi Actuarial Tools)

- Deep understanding of practice performance and patient population risk
- Ongoing monitoring and analysis of claims data
- Targeted identification of **high-impact care opportunities**

Thank You for Joining Our Session!

look for us at upcoming fall conferences



Amy Stevens

General Manager, Provider Performance and Value Driven Transformation, Innovaccer



Renee Tollison

Vice President, EVU Analytics & Intelligence, Prisma Health



Puneet Budhiraja

Managing Director, Actuarial, Humbi AI by Innovaccer



Michael Phillips, MD

Consultant and former CMO, Rise Health



Scan the QR Code to
Schedule a Call

humbi.ai

[in /company/humbi-ai/](https://www.linkedin.com/company/humbi-ai/)

How we drive impact: From data to insights to outcomes

